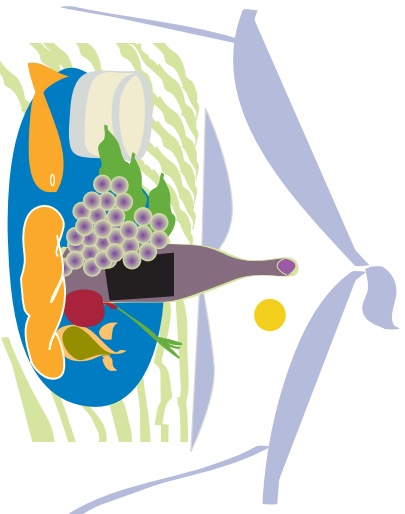


**SAVE THE DATE!**  
**SATURDAY, JUNE 18**



**Sonoma Odyssey**  
*of Food & Wine*

**TO BENEFIT THE SONOMA COUNTY WINE LIBRARY  
AND THE FARM WORKER HOUSING FUND**

WINE LIBRARY ASSOCIATES  
OF SONOMA COUNTY  
*in conjunction with*  
THE FARM WORKER HOUSING FUND  
*present*

SONOMA ODYSSEY OF FOOD & WINE

2-5:30 PM, Saturday, June 18, 2005

**Richard's Grove & Saralee's Vineyard**

- *30 of Sonoma County's finest wineries*
- *food by the Sonoma County Culinary Guild*
- *exciting live and silent auctions*

**Members \$40, Non-members \$50**  
**tickets/reservations: 707.431.2898**  
**information: [sonomaodyssey.org](http://sonomaodyssey.org)**



Return address: WLASC, P.O. Box 43, Healdsburg, CA 95448